

Bridge training Program for Practicing Occupational Therapy in Quebec



EQUIVALENCE RECOGNITION PROCESS

As a candidate trained abroad with a degree in occupational therapy (OT) who has chosen to immigrate to Quebec with the desire to practice OT in the province, you will have to register with the Ordre des ergothérapeutes du Québec (OEQ).

By reviewing the equivalency of your diplomas and training, the OEQ will determine whether or not you meet the required level of proficiency for practicing OT in Quebec. If discrepancies are identified, the OEQ will then issue a bridge training prescription.

Once the bridge training has been successfully completed, training equivalence will be recognized. This will provide access to a licence to practice and, subsequently, to membership with the OEQ.

For more details on the steps for obtaining the right to practice OT in Quebec through the equivalence recognition process, please see:

www.oeq.org

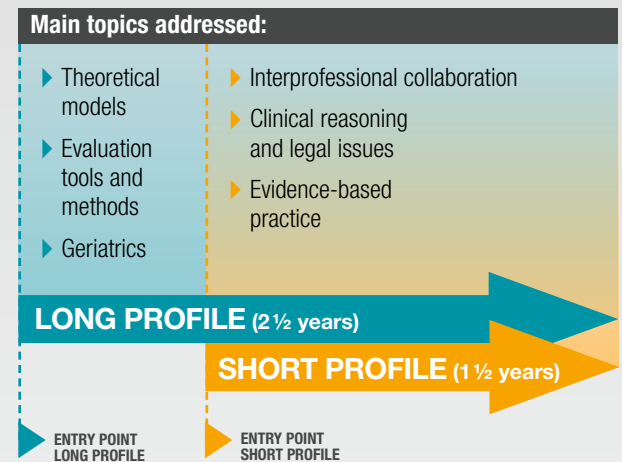
SECTION
Exercer la profession/
Obtenir un permis/
Candidats hors Canada

THE “PROGRAMME DE QUALIFICATION EN ERGOTHÉRAPIE” (PQE)

Jointly developed by the **Université de Montréal**'s OT Program and the OEQ, this graduate-level bridge training program offers candidates a specially adapted educational path that will prepare them to practice OT in Quebec.

As the needs of foreign-trained candidates vary, various points of entry into the program have been anticipated so that individuals can benefit from training best suited to their needs. Thus, the long profile includes all program courses, while the short profile exempts candidates from several courses scheduled early in the program.

Studies are carried out on a full-time basis, and the program can take up to 2½ years to complete.



Candidates must successfully complete the required courses and clinical fieldwork specified in the personal bridge training prescription from the OEQ in order to be granted **training equivalence**.

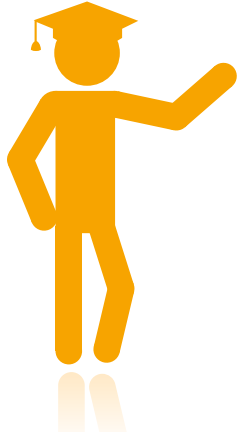


Ordre
des ergothérapeutes
du Québec



THE “PROGRAMME DE QUALIFICATION EN ERGOTHÉRAPIE” (PQE)

As part of the PQE, candidates follow selected courses alongside students of regular university OT programs. To support the successful completion of the bridge training program, various resources, courses, preparatory activities, and other strategies have been developed and implemented to facilitate the candidates’ integration into the program, and to provide them with the support they need in preparing to practice OT in Quebec.



Strategies implemented to facilitate the successful completion of the candidates’ bridge training program

Language	
MEANS <ul style="list-style-type: none"> ▶ French language proficiency required as a condition of eligibility for the program ▶ Information on available French language courses ▶ Professional vocabulary tools (glossary) 	GOAL <ul style="list-style-type: none"> ▶ To prevent language-related difficulties in the acquisition of knowledge
Readiness skills	
MEANS <ul style="list-style-type: none"> ▶ Preparatory modules and workshops. For example: <ul style="list-style-type: none"> ▶ Computer skills ▶ Scientific database searches 	GOAL <ul style="list-style-type: none"> ▶ To support the acquisition of specific skills needed to facilitate full participation in the bridge training program
Requisite preparation and knowledge	
MEANS <ul style="list-style-type: none"> ▶ Online preparatory modules introducing current pedagogical approaches that require active learner participation ▶ Preparatory modules linked to specific courses of the program ▶ Preparatory workshops prior to clinical fieldwork 	GOAL <ul style="list-style-type: none"> ▶ To facilitate candidates’ integration into selected courses in the regular OT curriculum
Learning tools and strategies	
MEANS <ul style="list-style-type: none"> ▶ Professional portfolio ▶ A course on the context of practicing OT in Quebec given early in the program 	GOALS <ul style="list-style-type: none"> ▶ To assist in developing and maintaining a reflective professional practice ▶ To guide candidates’ professional development and adaptation
Support	
MEANS <ul style="list-style-type: none"> ▶ Various sources of support for candidates: <ul style="list-style-type: none"> ▶ Mentoring ▶ Student/peer support ▶ Clinical fieldwork supervision guide 	GOALS <ul style="list-style-type: none"> ▶ To support candidates throughout the bridge training program ▶ To give clinical fieldwork supervisors a better understanding of the candidates’ specific training needs so they are able to provide supervision adapted to the candidates’ situations

PQE ELIGIBILITY REQUIREMENTS

There are two main conditions for eligibility:

- ▶ Applicants must demonstrate their level of knowledge of the **French language** by obtaining a score of at least 785/990 on the Test du français international (TFI), representing an advanced level of French language proficiency.
- ▶ Applicants must submit a **valid bridge training prescription from the OEQ**. Note that these prescriptions are valid for three years.

See the [“Programme de qualification en ergothérapie” website](#) for more details.

Please note that this document is a general presentation of the “Programme de qualification en ergothérapie” as it currently exists in 2015. It is not intended to provide exhaustive information, and does not take into account any future modifications.

FOR MORE INFORMATION:

Guylaine Dufour, erg., M. Réad.
Admissions Coordinator

Ordre des ergothérapeutes du Québec
2021 Union Avenue, Suite 920
Montreal (Quebec) H3A 2S9

514 844-5778 ext. 236 / 1 800 265-5778 ext. 236
dufour@oeq.org

This program was developed with financial assistance from the following department:

**Immigration,
Diversité
et Inclusion**
Québec